





Alderwood School (Senior Site)

Expansion from 6FE to 8FE
Secondary (300 places)

PROJECT APPRAISAL

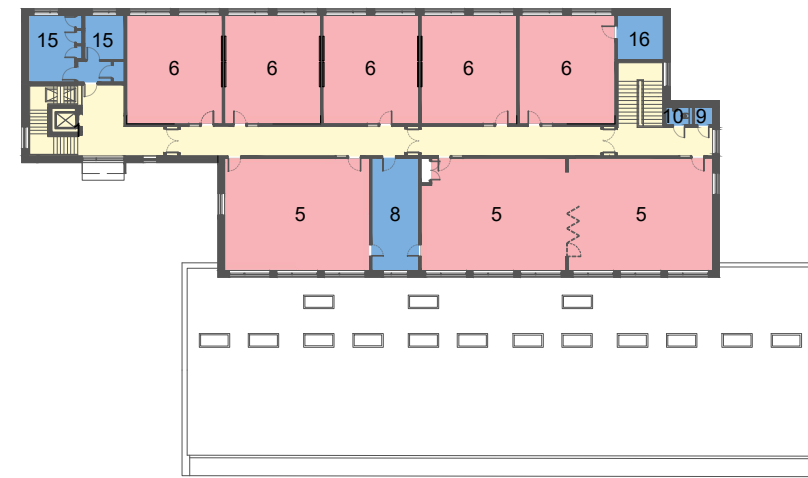
Key

-  HCC Ownership Boundary
-  Vehicle Access Point
-  Pedestrian Access Point
-  New Secure Fence Line

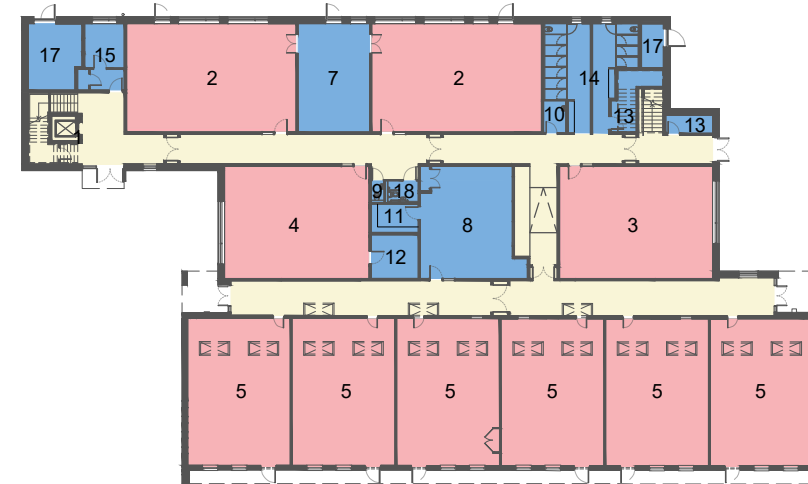
1. Foyer
2. Resistant Materials
3. Textiles
4. Graphics
5. Science
6. General teaching
7. Multi-Materials Store
8. Science Prep Room
9. Staff WC
10. Cleaners Store
11. Science Chemical Store
12. Teaching Store
13. Store
14. WC's
15. Office / Reprographics
16. Server Room
17. Plant Room
18. Accessible WC



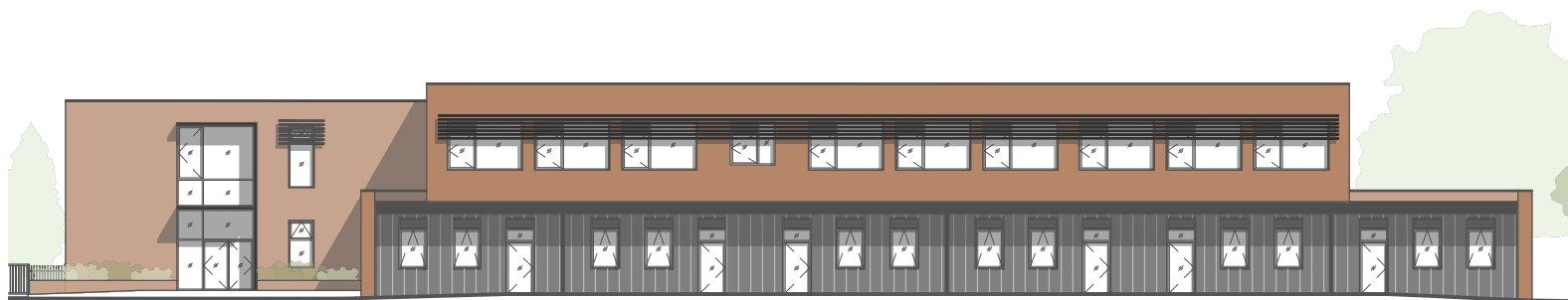
Proposed Site Plan NTS



Proposed First Floor Plan NTS



Proposed Ground Floor Plan NTS



Proposed South Elevation NTS



Proposed Main Square - Looking East

NTS @ A3

P13221-HCC-00-ZZ-DR-A-1900

January 2024